



## **How to configure Hikvision LPR Function via NVR**

## 1 Purpose

Vehicle Detection is available for the road traffic monitoring. In Vehicle Detection, the passed vehicle can be detected and the picture of its license plate can be captured. You can send alarm signal to notify the surveillance center and upload the captured picture to FTP server.

**Note:** *Road traffic function varies according to different camera models. And, Mixed-traffic Detection (detecting pedestrian, non-motor vehicle and motor vehicle) is also available for some certain regions.*

## 2 Vehicle Detection Configuration via NVR

### 2.1 Enable Vehicle Configuration via web

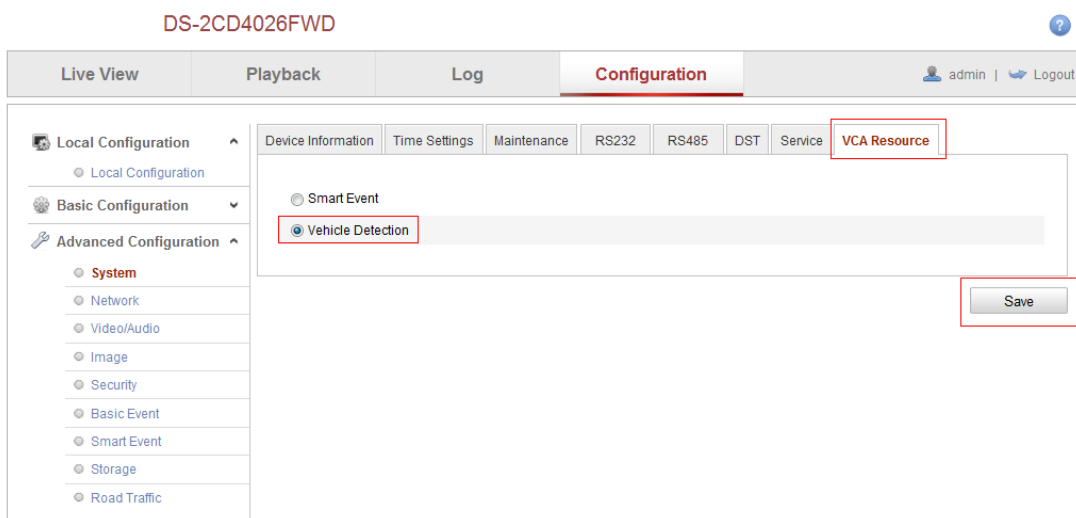
Connect to camera via any appropriate WEB browser and login to camera using the appropriate administrative account.

1. Upgrade the firmware to the specific firmware (**5.2.7 build 150210**). The camera has to be connected to local network.
2. VCA resource can be efficiently allocated to get a better performance. Two modes of VCA resource allocation are supported: Smart Event and Vehicle Detection.

Go to **Configuration-> Advanced Configuration-> System -> VCA Resource**

Select **Vehicle Detection** for the VCA resource allocation. Reboot the device to activate the new settings.

**Note:** *When Smart Event is enabled, the Vehicle Detection function is limited; When the Vehicle Detection is enabled, high frame rate, recording on SD card or NAS / CIFS, some certain smart events (for the details, see the actual operation interface) and people counting (non-iDS) are limited.*



## 2.2 LPR Configuration on local NVR

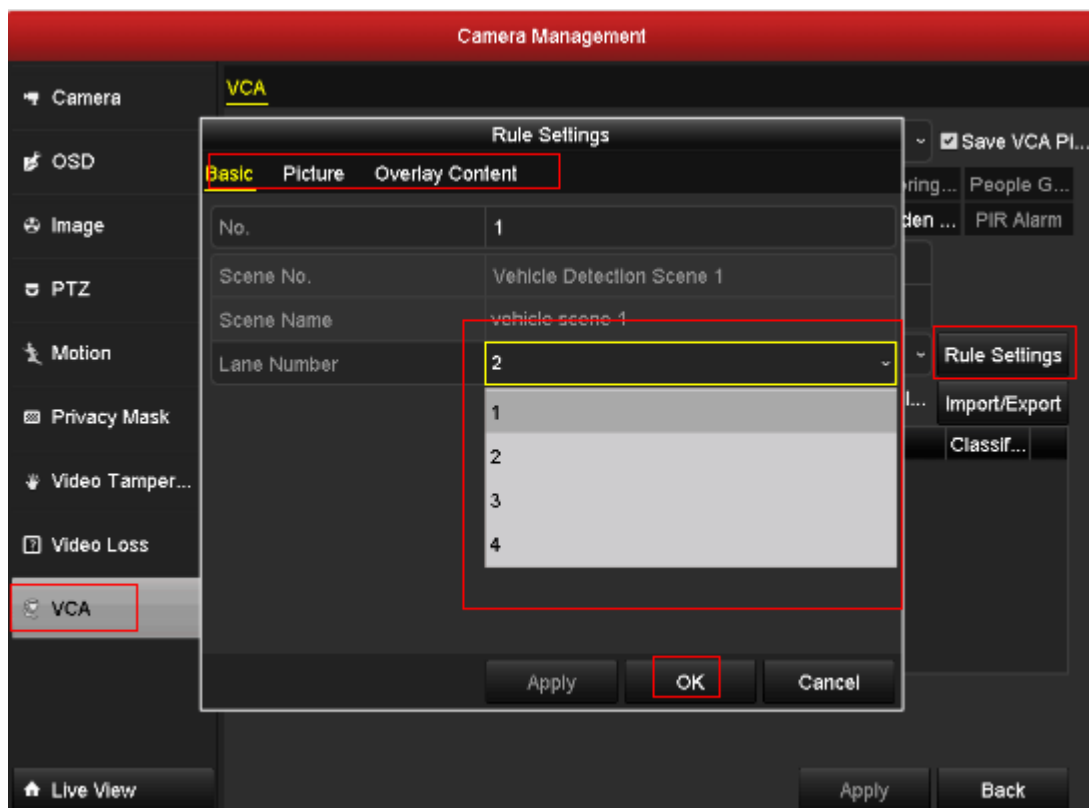
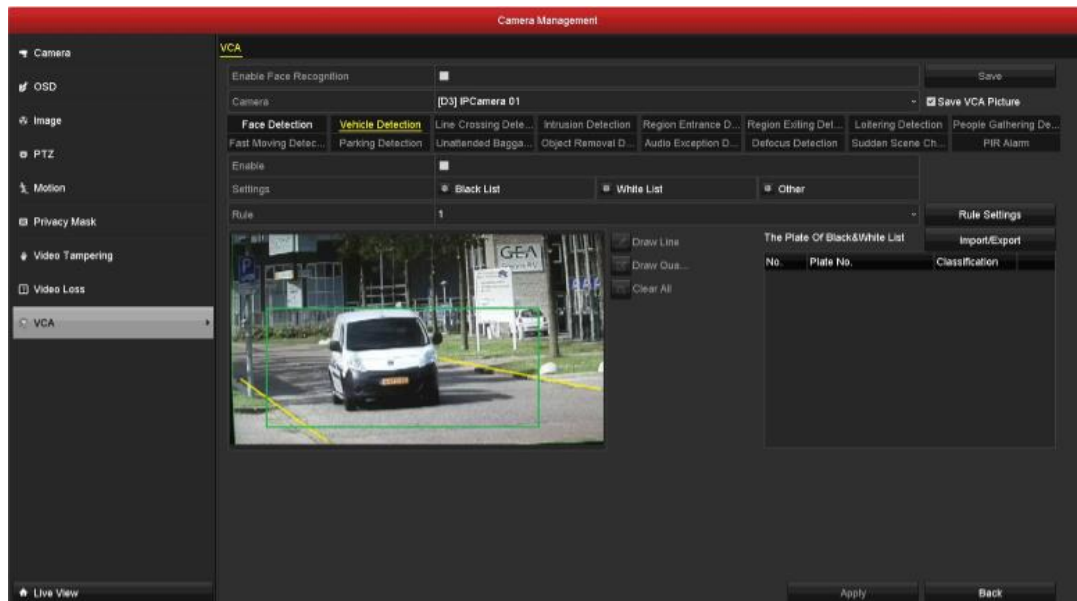
### 2.2.1 Add device

Go to **Menu->Camera**, add the camera into the NVR as follows.

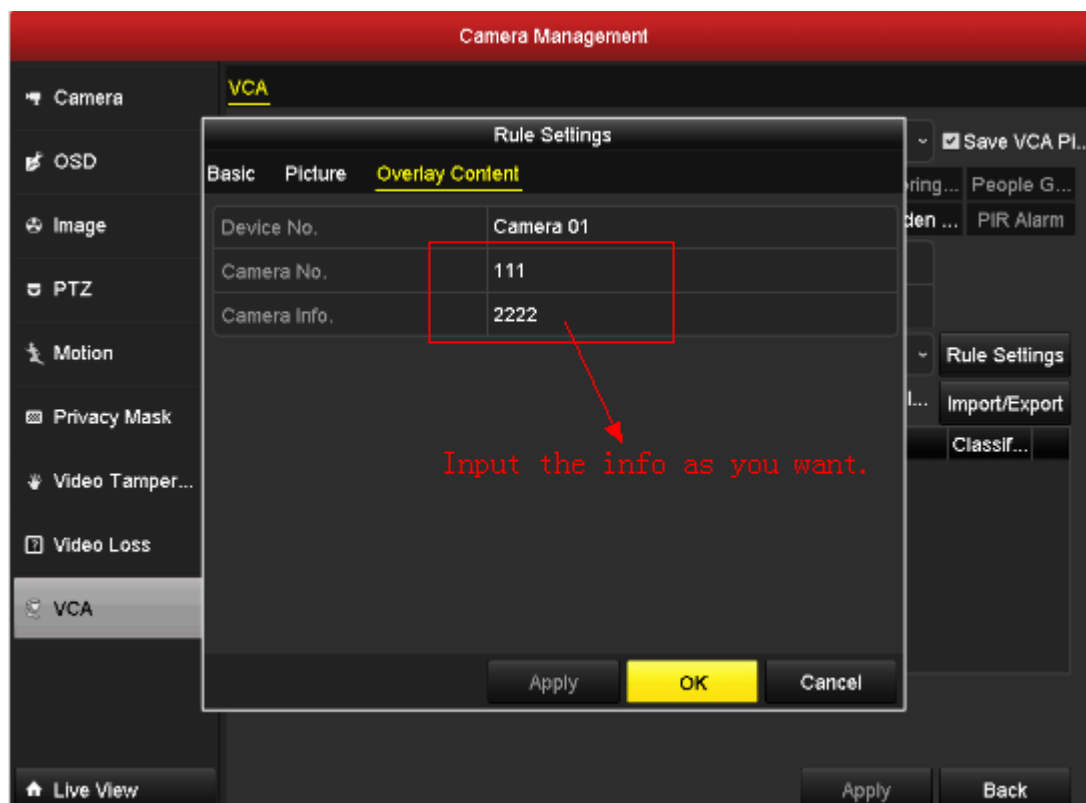


### 2.2.2 LPR Configuration on Local NVR

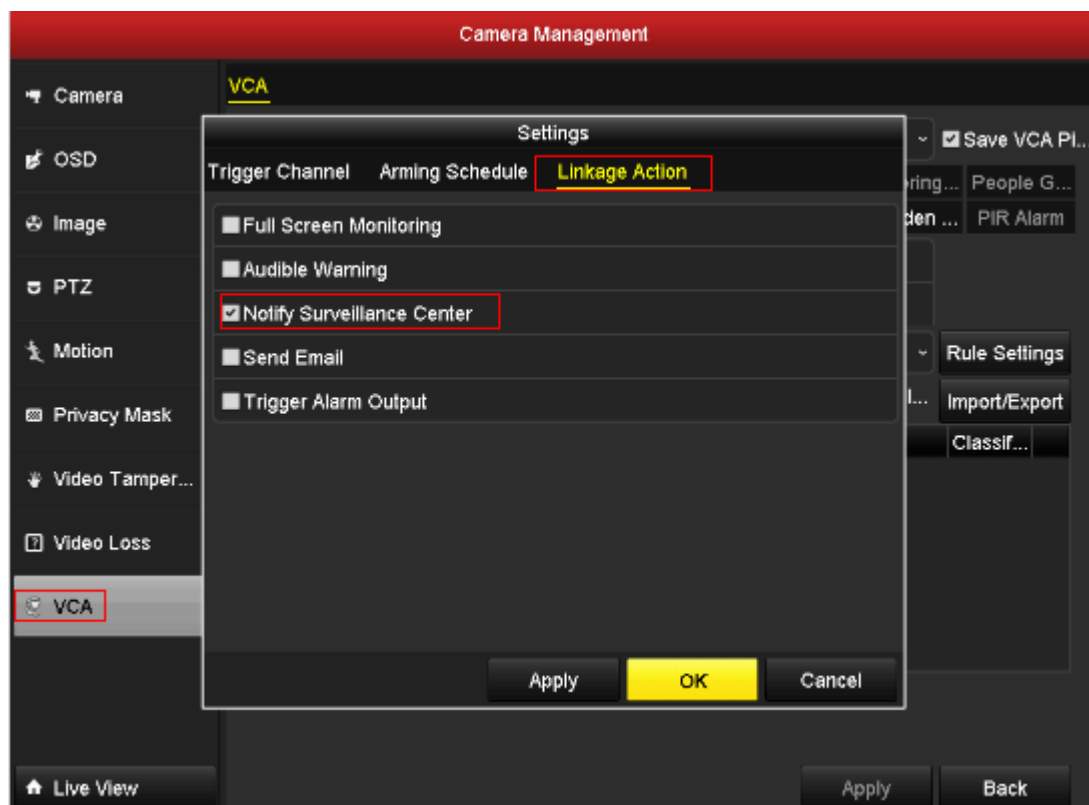
Go to **Menu->Camera->VCA->Rule Settings**, choose the **Lane number** as you want.



Go to **VCA->Picture** and **VCA->Overlay Content**, configure the parameter as follows.

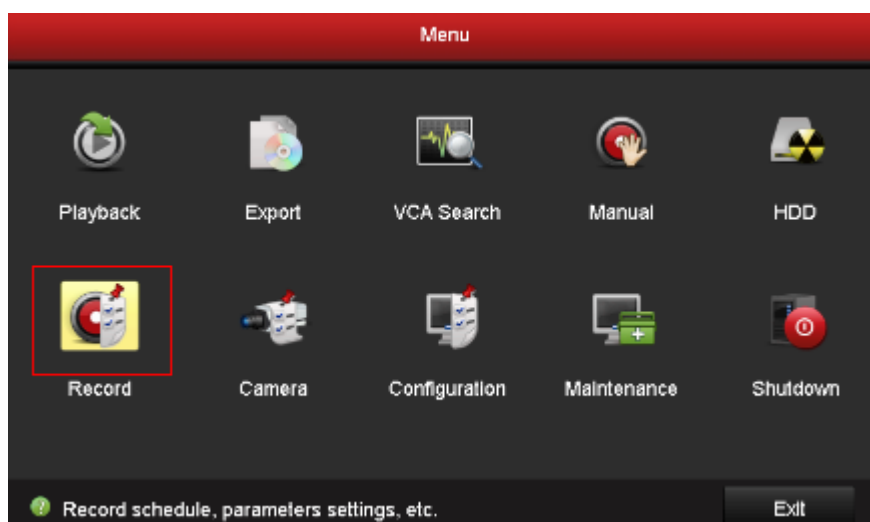


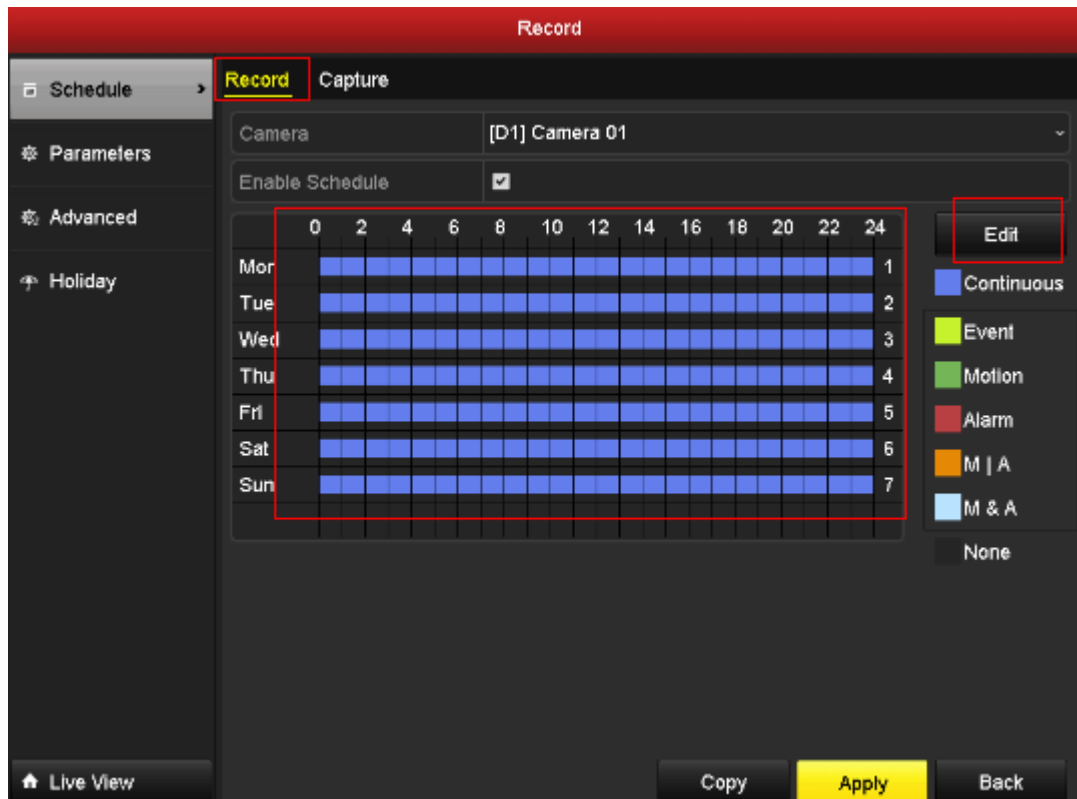
Go to **VCA->Others**, configure the **Trigger channel/Arming Schedule** and set the **Linkage Action** as follows.



### 2.2.3 Record Schedule

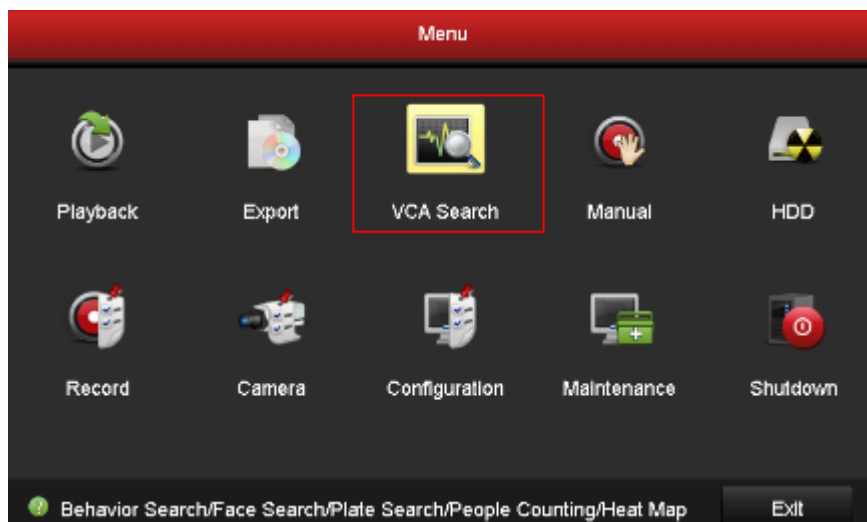
In sake of saving the video clip more accurately, users need to configure the record schedule on local NVRs. Please see the detailed configuration below.





### 3 Result Query

Go to **Menu ->VCA Search->Plate Search**, select the channel and start/stop time, users can search the plate info on the local NVR. Please see the details below.



VCA Search

✈ Behavior Search...

👤 Face Search

🚗 Plate Search

👤 People Counting...

📊 Heat Map

🏠 Live View

### Plate Search

☒ Analog  
  
☒ IP Camera

☒ A1

☒ A2

☒ A3

☒ A4

☒ A5

☒ A6

☒ A7

☒ A8

☒ A9

☒ A10

☒ A11

☒ A12

☒ A13

☒ A14

☒ A15

☒ A16

☒ D1

☒ D2

☒ D3

☒ D4

☒ D5

☒ D6

☒ D7

☒ D8

☒ D9

☒ D10

☒ D11

☒ D12

☒ D13

☒ D14

☒ D15

☒ D16

☒ D17

☒ D18

☒ D19

☒ D20

☒ D21

☒ D22

☒ D23

☒ D24

☒ D25

☒ D26

☒ D27

☒ D28

☒ D29

☒ D30

☒ D31

☒ D32

Start Time

03-05-2015

00:00:00

📅

End Time

03-05-2015

23:59:59

📅

National

All

Plate No.

Search
Back

Chart
List

📁 All

01-02-2015 14:51:10

01-02-2015 04:04:02

01-02-2015 04:04:04

01-02-2015 04:02:24

01-02-2015 04:01:17

01-02-2015 04:04:03

01-02-2015 04:04:04

01-02-2015 04:04:05

01-02-2015 04:05:02

01-02-2015 04:05:07

01-02-2015 04:05:03

01-02-2015 06:06:11

01-02-2015 02:02:15

01-02-2015 02:02:16

01-02-2015 02:02:23

01-02-2015 05:03:21

01-02-2015 06:00:24

01-02-2015 05:04:19

01-02-2015 06:04:17

01-02-2015 05:04:44

Total: 1668 P: 23/64

Plate No. 4VTG19

Filter

Country: Netherlands

☒ Picture
 ☒ Record
 ☒ Statistical Information

Export All
Export
Back

Property in copyright belongs to Hikvision.

8